

# Interstate 229 / Exit 3 (Minnesota Ave) Interchange and Environmental Study



Informational Meeting #2 (video recording)

Alan Murra, PE – Short Elliott Hendrickson Inc. (SEH®)

November 6, 2020



Interchange and Environmental Study for I-229  
Exits 3 (Minnesota Ave) and 4 (Cliff Ave)

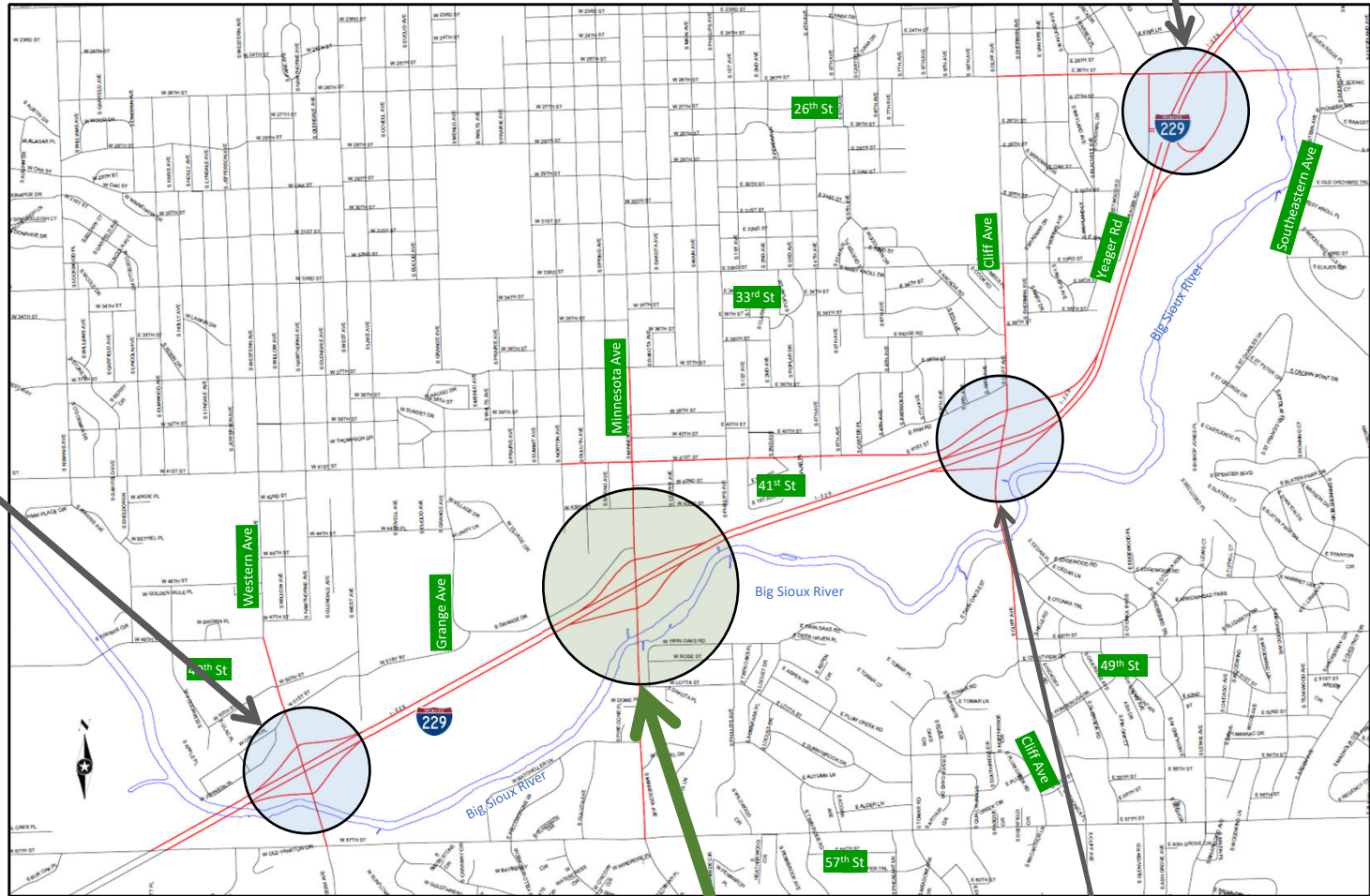


Alan Murra

# Project Study Area (I-229/Exit 3)



I-229 / Exit 5  
(26<sup>th</sup> St)



I-229 / Exit 2  
(Western Ave)



Interchange and Environmental Study for I-229  
Exits 3 (Minnesota Ave) and 4 (Cliff Ave)

I-229 / Exit 3  
(Minnesota Ave)

I-229 / Exit 4  
(Cliff Ave)

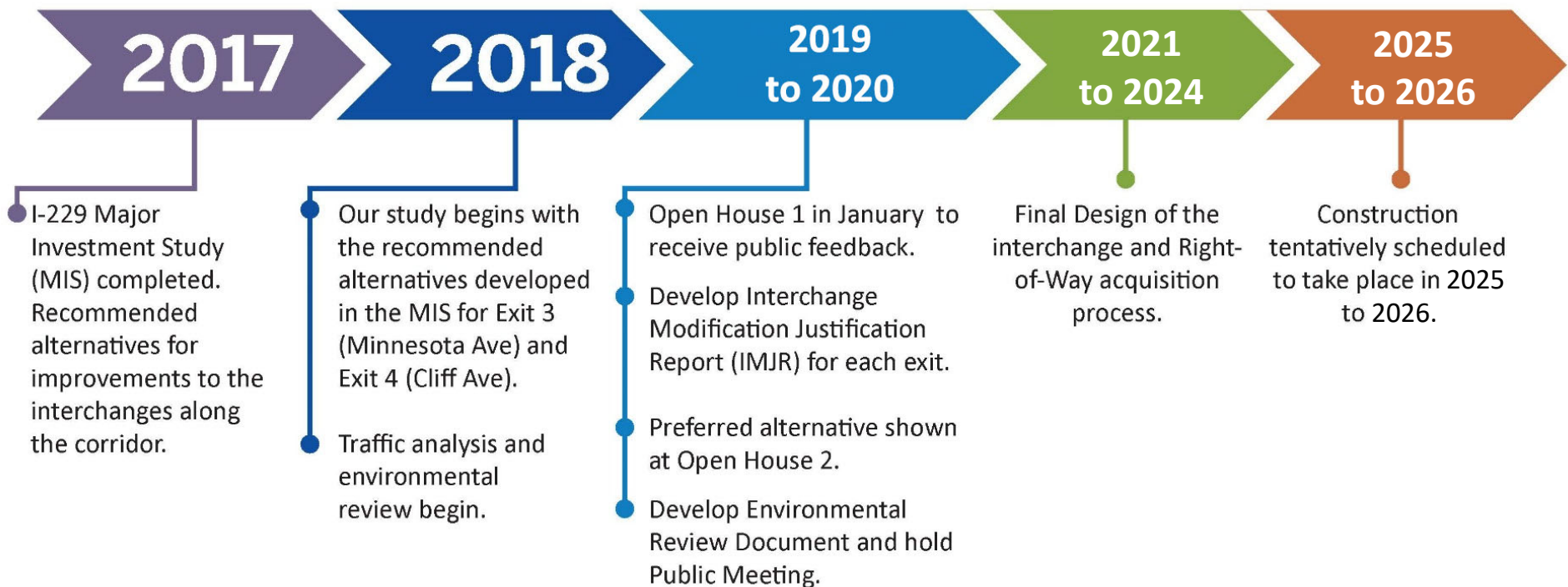


Alan Murra



# Project Timeline

## Timeline Overview



Interchange and Environmental Study for I-229  
Exits 3 (Minnesota Ave) and 4 (Cliff Ave)



Alan Murra

# What options were looked at for I229 / Exit 3 (Minnesota Ave)?

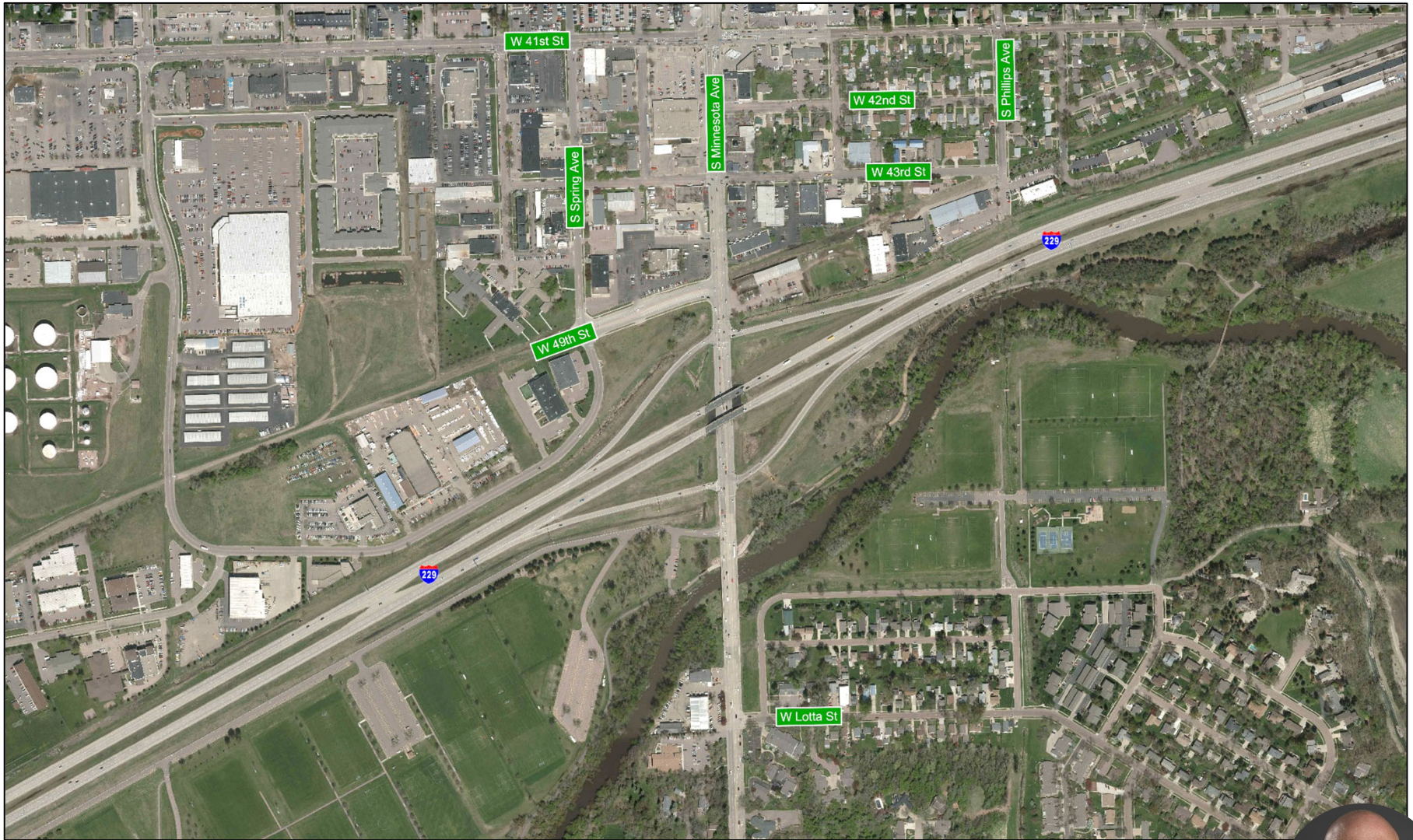


- No Build – Do nothing and leave the interchange as is.
- Alternative 2C - Convert to a partial cloverleaf interchange, with a  $\frac{3}{4}$  access at Minnesota Ave & 43<sup>rd</sup> St.
- Alternative 2D - Convert to a partial cloverleaf interchange, with no access at Minnesota Ave & 43<sup>rd</sup> St.
- Alternative 9D - Convert to a single point urban interchange (SPUI).



Alan Murra

# Exit 3 (Minnesota Ave) – No Build / Leave As Is



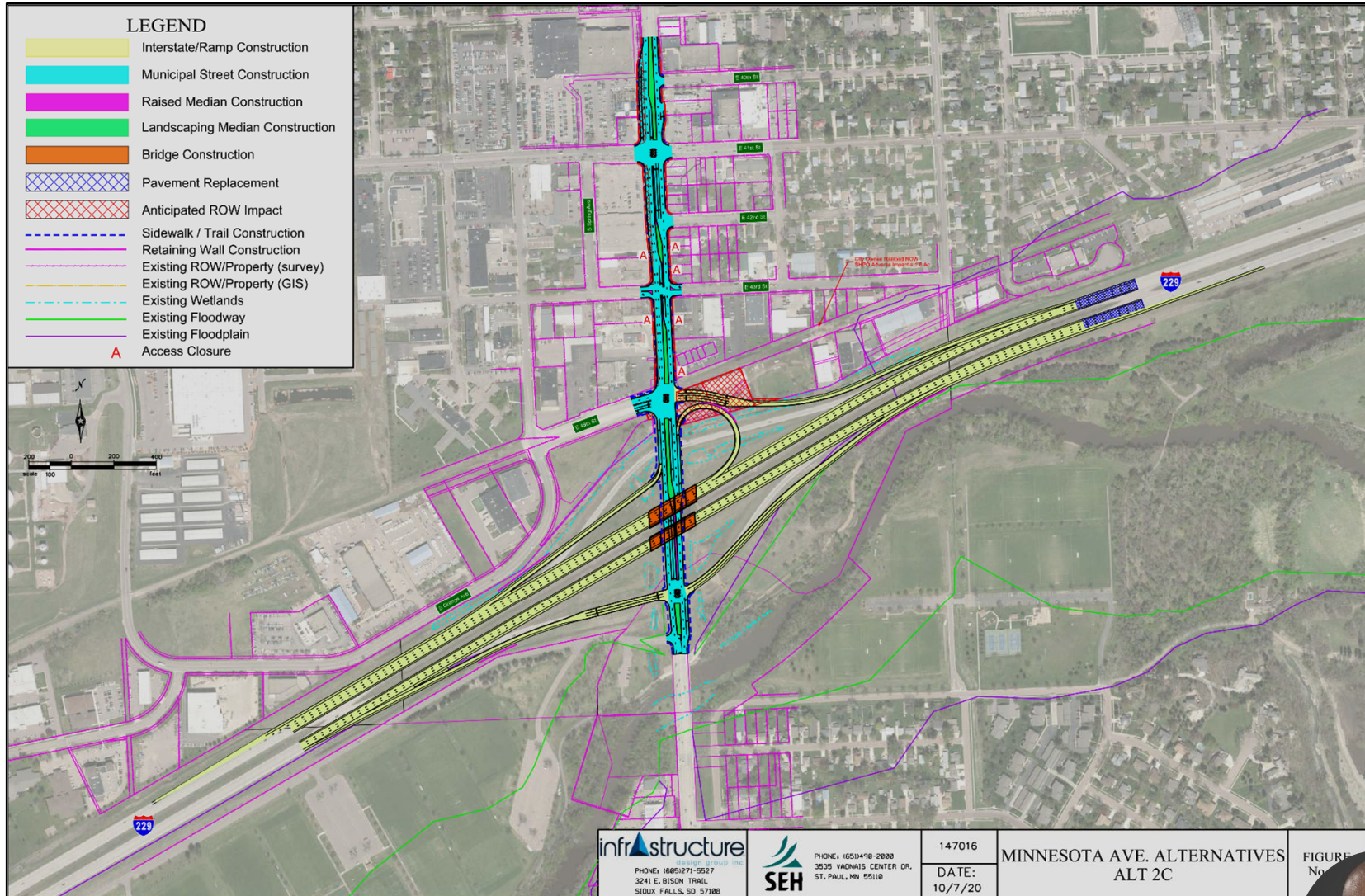
Interchange and Environmental Study for I-229  
Exits 3 (Minnesota Ave) and 4 (Cliff Ave)

Existing Interchange



Alan Murra

# Exit 3 (Minnesota Ave) – Alternative 2C

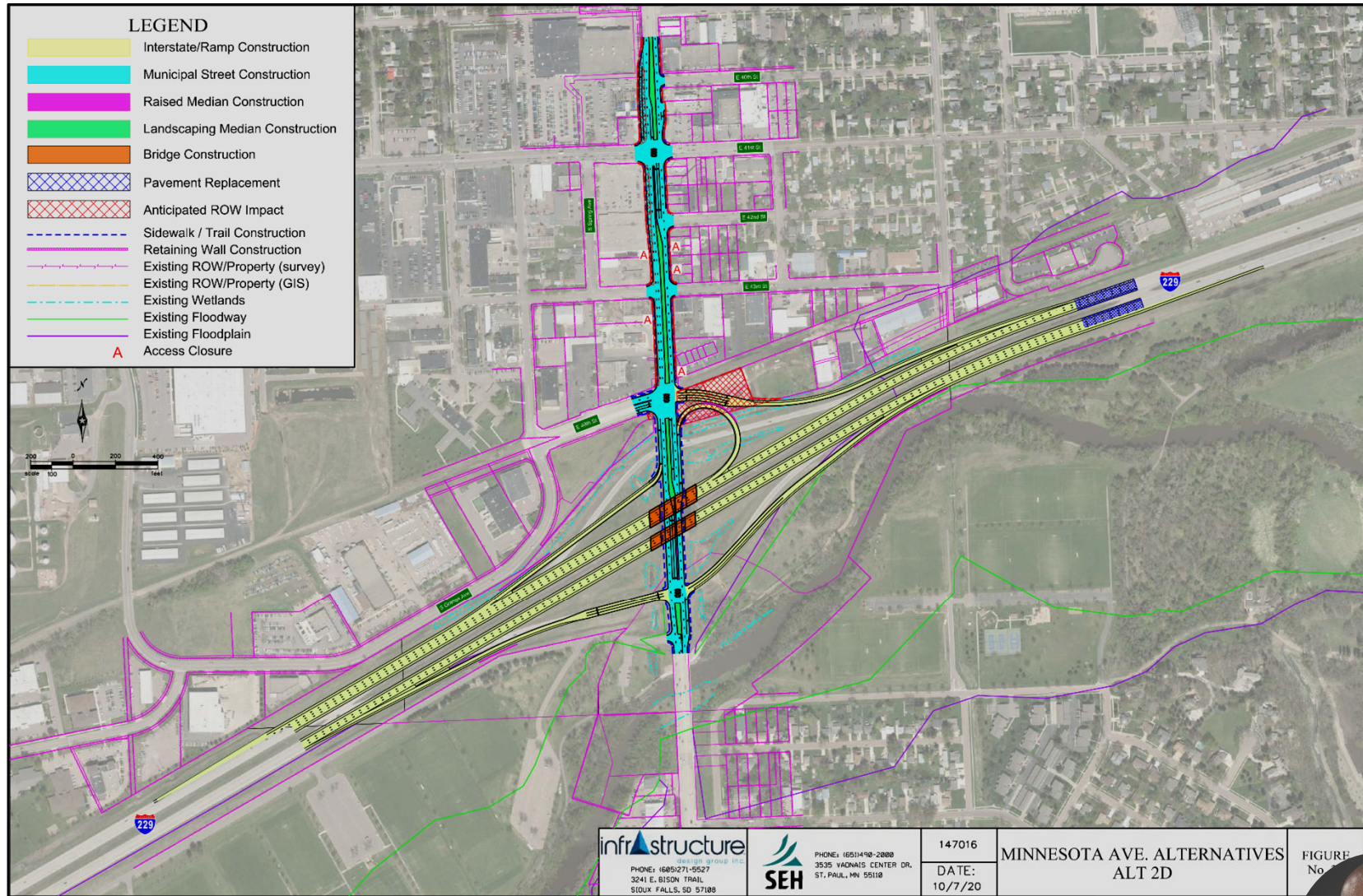


Partial Cloverleaf Interchange  
(with  $\frac{3}{4}$  access at Minnesota Ave & 43<sup>rd</sup> St.)



Alan Murra

# Exit 3 (Minnesota Ave) – Alternative 2D

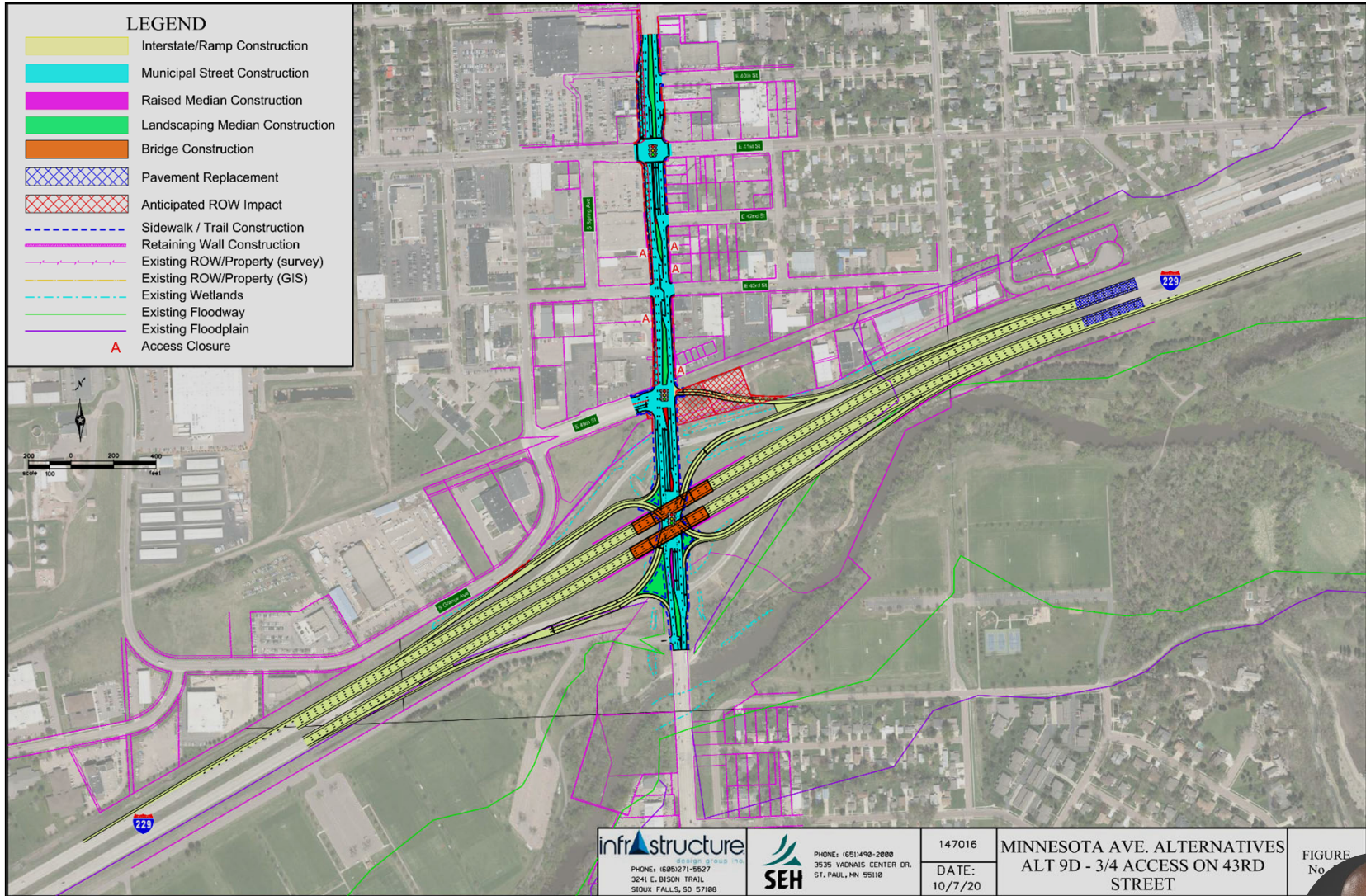



Partial Cloverleaf Interchange  
(with  $\frac{3}{4}$  access at Minnesota Ave & 43<sup>rd</sup> St.)



Alan Murra

# Exit 3 (Minnesota Ave) – Alternative 9D



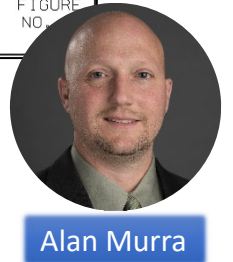
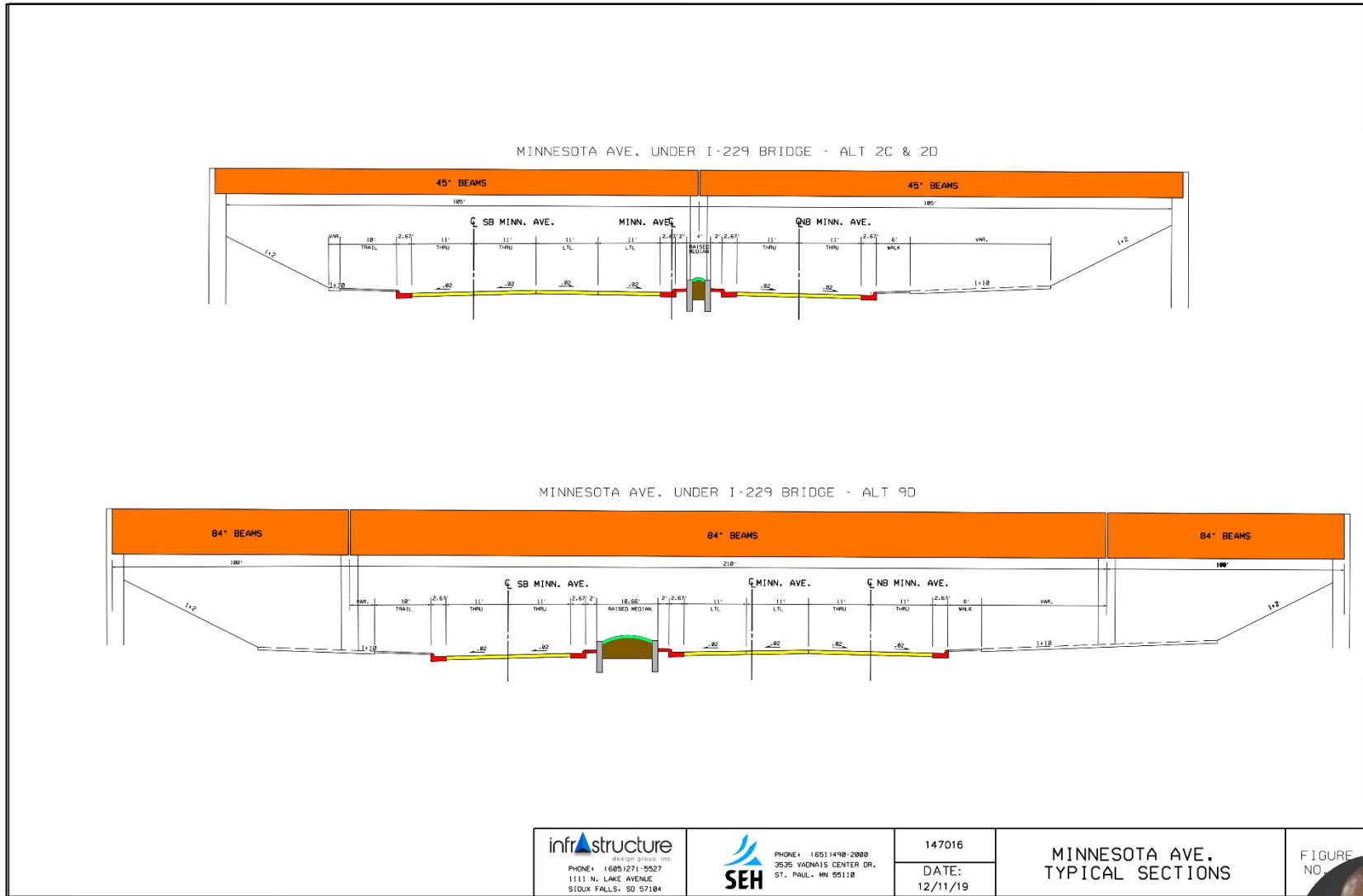
Single Point Urban Interchange  
 Recommended Alternative



Alan Murra



# Exit 3 (Minnesota Ave) – Typical Road Section





# What alternative performed best? How were they evaluated?

- **Alternative 9D** - Convert to a single point urban interchange (SPUI).



Alan Murra



# Exit 3 (Minnesota Ave) – Evaluation Matrix

Evaluation Criteria	No-Build No improvements	Alternate #2C Partial Cloverleaf (Loop Ramp) (3/4 access at 43rd St)	Alternate #2D Partial Cloverleaf (Loop Ramp) (no access at 43rd St)	Alternate #9D SPUI* (3/4 access at 43rd St)
Meets Design Criteria	○	●	●	●
Meets Spacing Criteria	○	●	●	●
ROW Impacts	●	◐	◐	◐
Environmental Impacts	○	◐	◐	●
Safety Improvements	○	◐	◐	●
Operational Performance	○	◐	◐	●
Non-motorized Facilities	◐	●	●	◐
Cost Effectiveness	○	●	◐	◐
Planning Level Cost (in million dollars)	\$0.0	\$25.3	\$36.1	\$36.3
Overall	○	◐	◐	●

\*SPUI - Single Point Urban Interchange



## Comparison of key performance indicators:

- *Conformance with plans and design standards*
- *Right-of-way impacts (displacements and acres required)*
- *Environmental Impacts (natural and social environment concerns)*
- *Traffic Safety and Operations*
- *Construction (traffic staging and costs)*

## Recommended: Alternative 9D

- *Selected by the SAT as most able to achieve the project's Purpose and Need, especially safety improvements (expected crash reductions).*
- *Best value alternative for anticipated improvements.*

Legend	
●	Good
◐	Fair
◑	Satisfactory
◒	Unsatisfactory
○	Poor



Alan Murra


# Exit 3 (Minnesota Ave) – Alternative 9D



Exit 3  
I-229 & Minnesota Avenue  
18107 | 9/29/2020



Interchange and Environmental Study for I-229  
Exits 3 (Minnesota Ave) and 4 (Cliff Ave)

Single Point Urban Interchange  
 Recommended Alternative



Alan Murra


# Exit 3 (Minnesota Ave) – Alternative 9D

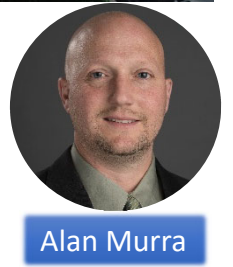


Exit 3  
I-229 & Minnesota Avenue  
18107 | 9/29/2020

infrastucture design group, inc. SEH CONFLUENCE

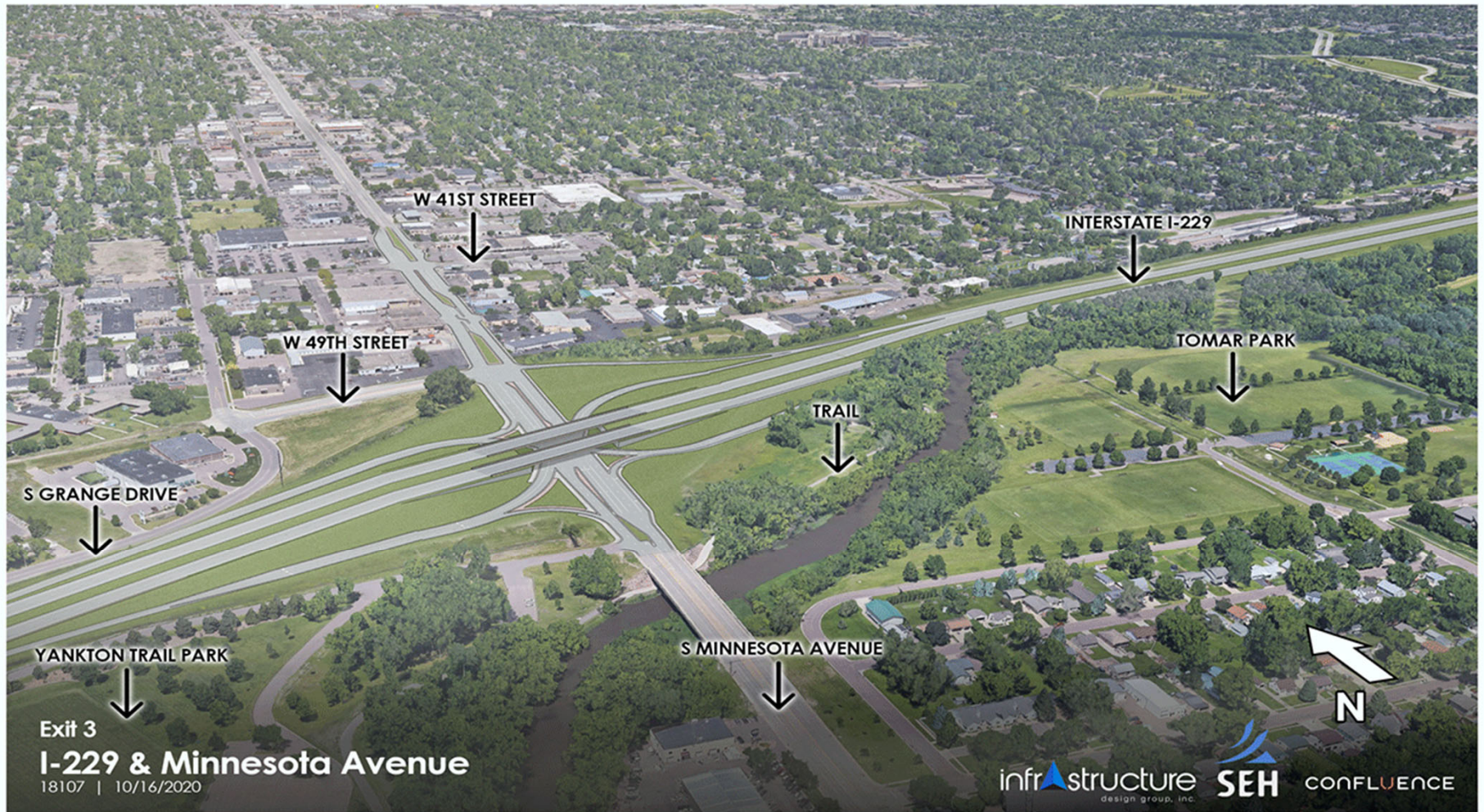



Single Point Urban Interchange  Recommended Alternative



Alan Murra

# Exit 3 (Minnesota Ave) – Alternative 9D



Single Point Urban Interchange  
 Recommended Alternative



Alan Murra



# We want to hear from you!

- Provide your feedback, comments, and questions by visiting the project website:

[www.i229exits3and4.com](http://www.i229exits3and4.com)

- You can also email or call Project Contacts:

**Steve Gramm** – SDDOT Project Development  
605.773.6641 or [steve.gramm@state.sd.us](mailto:steve.gramm@state.sd.us)

**Shannon Ausen** – City of Sioux Falls  
605.367.8607 or [sausen@siouxfalls.org](mailto:sausen@siouxfalls.org)

**Alan Murra** – Short Elliott Hendrickson Inc.  
605.330.7015 or [amurra@sehinc.com](mailto:amurra@sehinc.com)

## Thank you!



Alan Murra