

Interstate 229 / Exit 4 (Cliff Ave) Interchange and Environmental Study



Informational Meeting #2 (video recording)

Alan Murra, PE – Short Elliott Hendrickson Inc. (SEH®)

November 6, 2020



Interchange and Environmental Study for I-229
Exits 3 (Minnesota Ave) and 4 (Cliff Ave)



Alan Murra

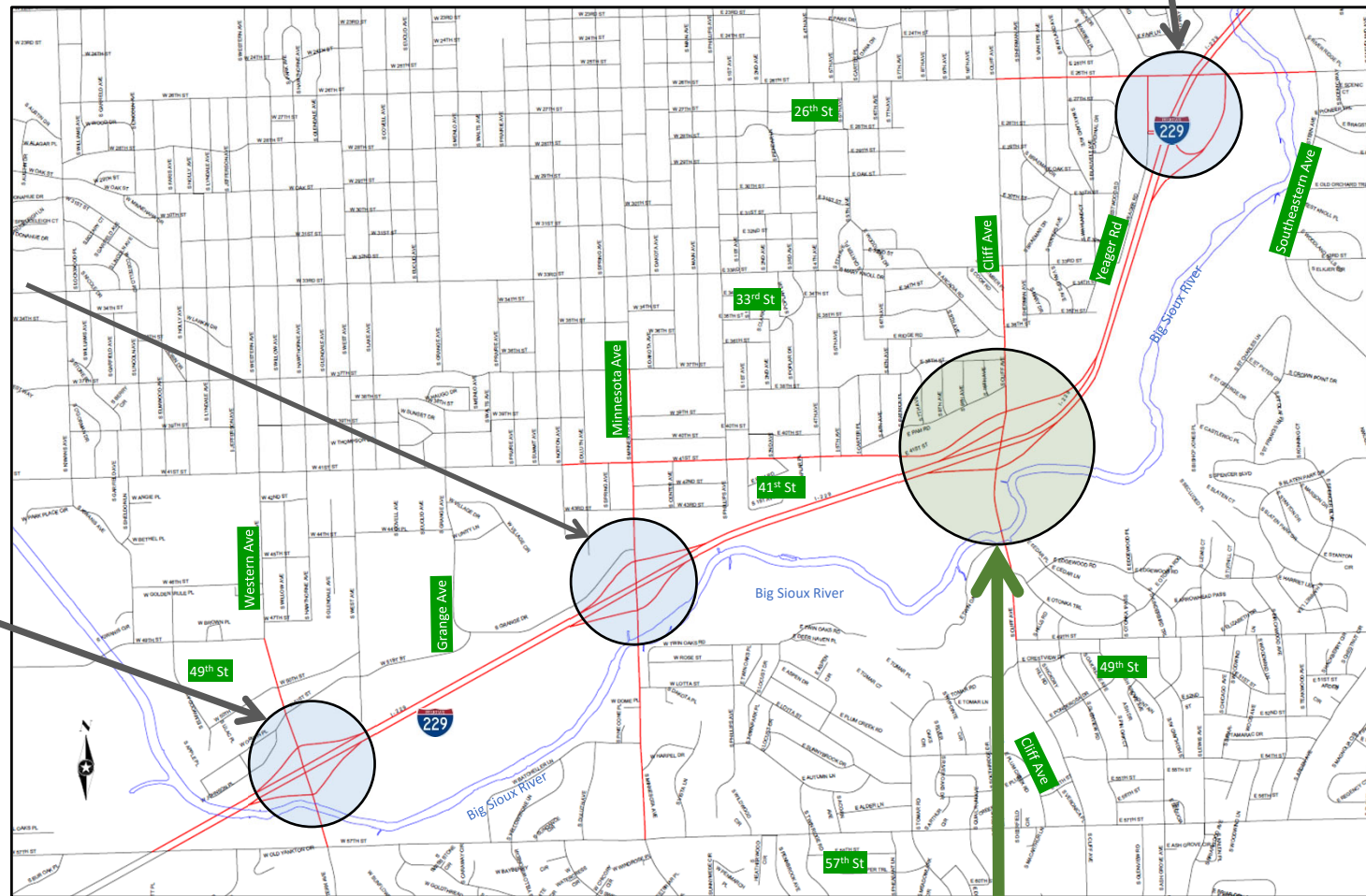
Project Study Area (I-229/Exit 4)

I-229 / Exit 5
(26th St)



I-229 / Exit 3
(Minnesota Ave)

I-229 / Exit 2
(Western Ave)



Interchange and Environmental Study for I-229
Exits 3 (Minnesota Ave) and 4 (Cliff Ave)

I-229 / Exit 4 (Cliff Ave)

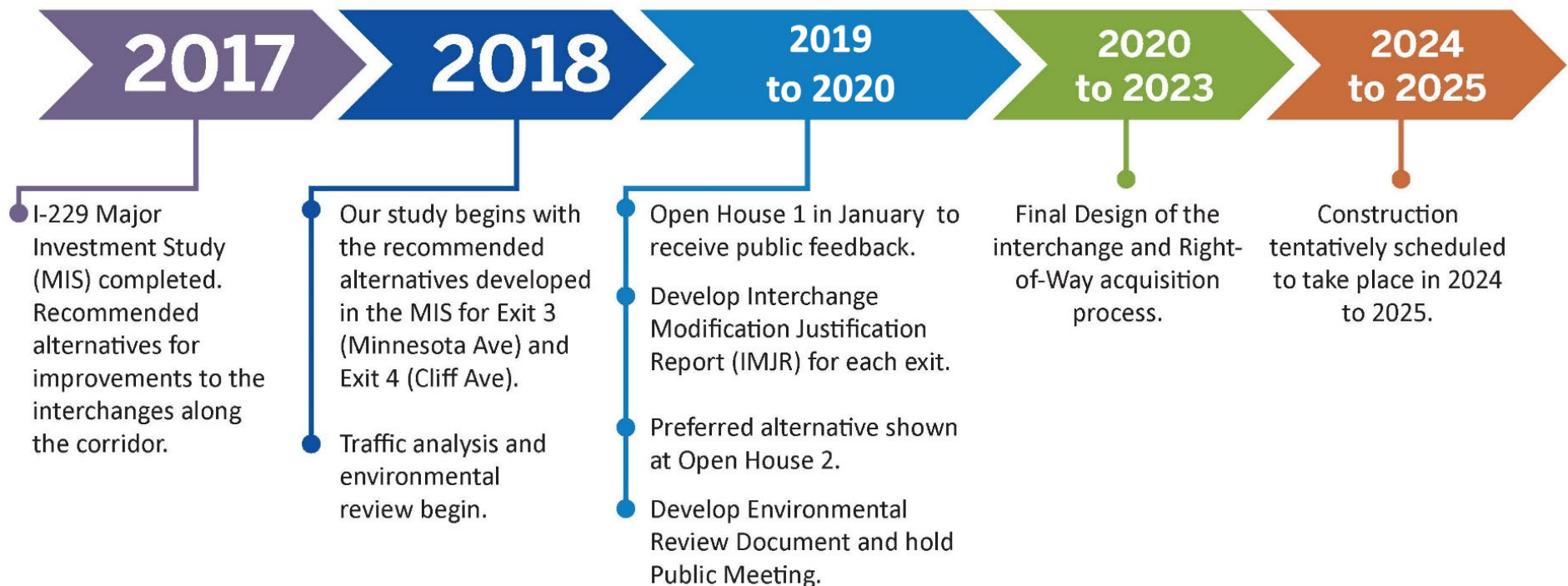


Alan Murra



Project Timeline

Timeline Overview



Interchange and Environmental Study for I-229
Exits 3 (Minnesota Ave) and 4 (Cliff Ave)



Alan Murra

What options were looked at for I229 / Exit 4 (Cliff Ave)?

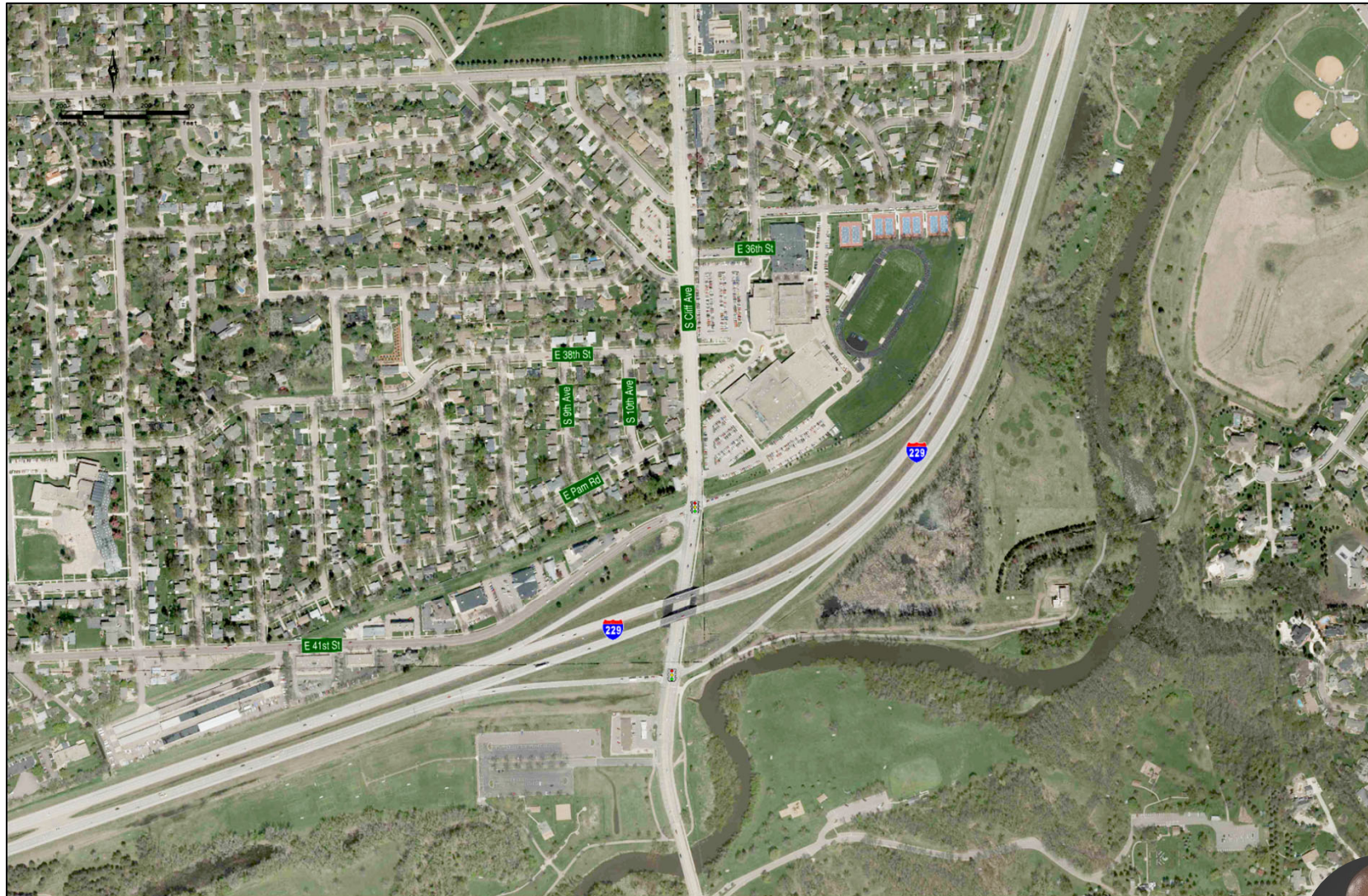


- No Build – Do nothing and leave the interchange as is.
- Alternative 1 - Convert to a partial cloverleaf interchange.
- Alternative 6 - Convert to a single point urban interchange (SPUI) and realign 41st St at Cliff Ave.
- Alternative 7 - Convert to a single point urban interchange (SPUI).



Alan Murra

Exit 4 (Cliff Ave) – No Build / Leave As Is



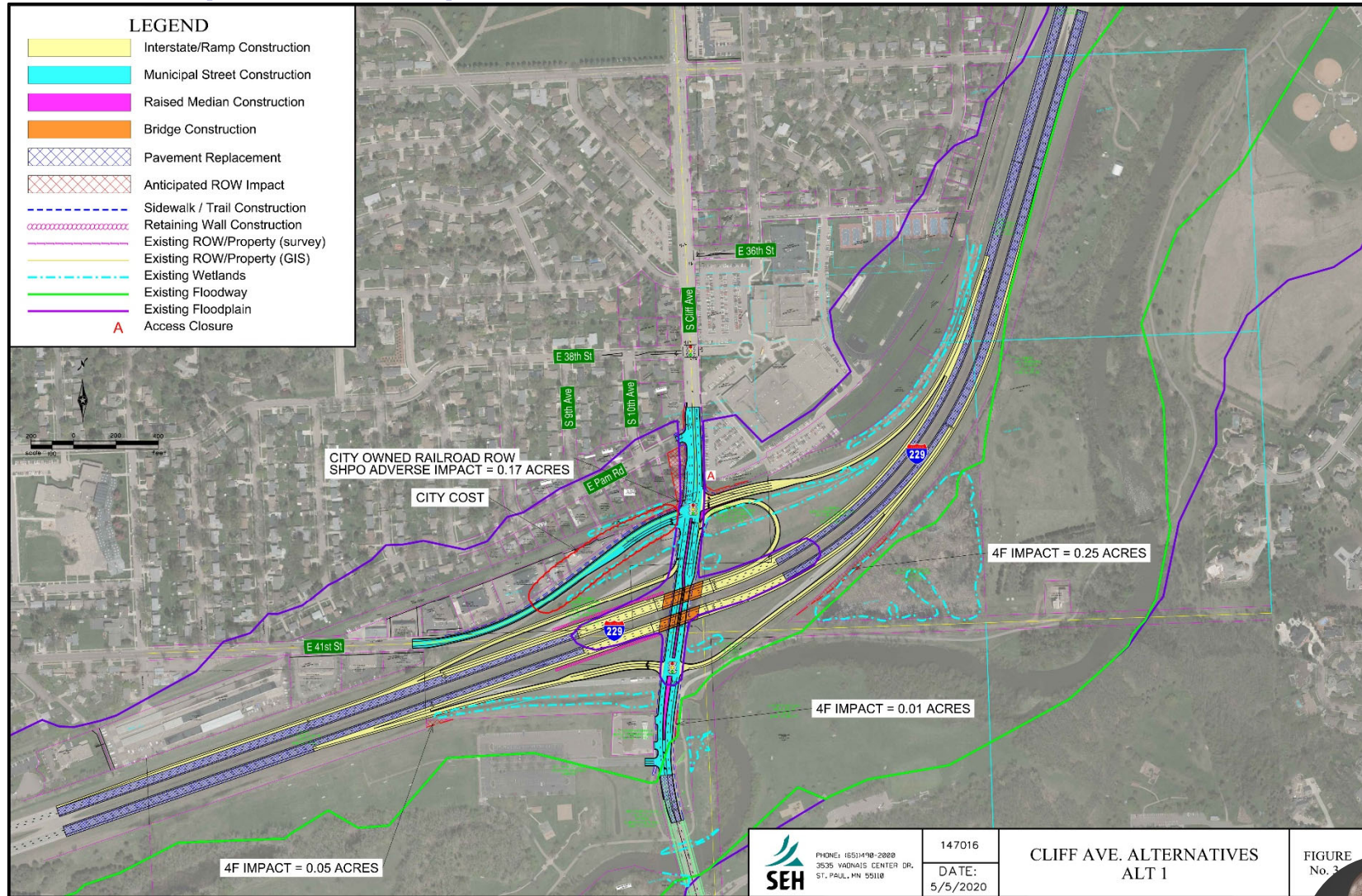
Interchange and Environmental Study for I-229
Exits 3 (Minnesota Ave) and 4 (Cliff Ave)

Existing Interchange



Alan Murra

Exit 4 (Cliff Ave) – Alternative 1



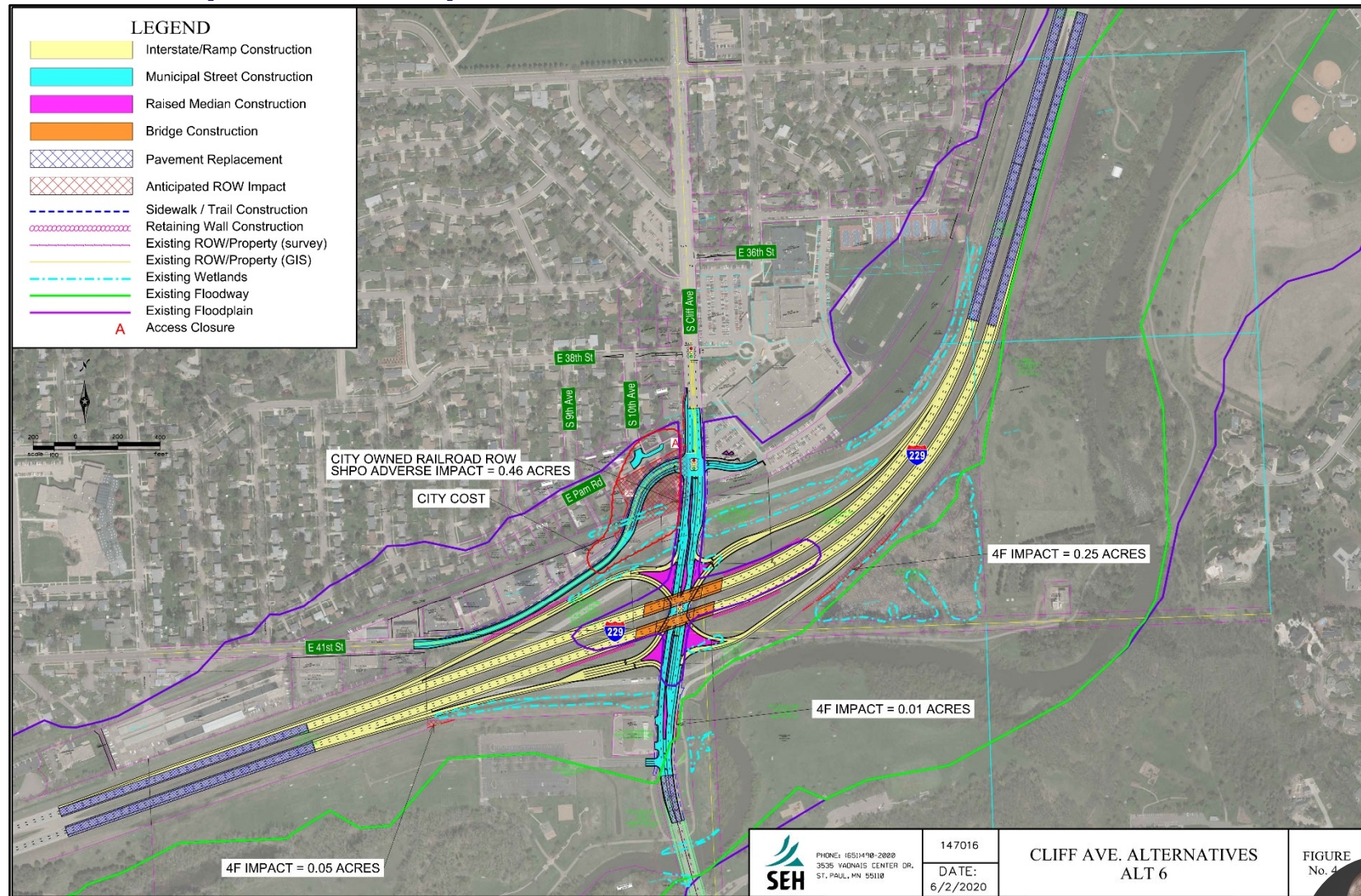
Interchange and Environmental Study for I-229
Exits 3 (Minnesota Ave) and 4 (Cliff Ave)

Partial Cloverleaf Interchange



Alan Murra

Exit 4 (Cliff Ave) – Alternative 6★

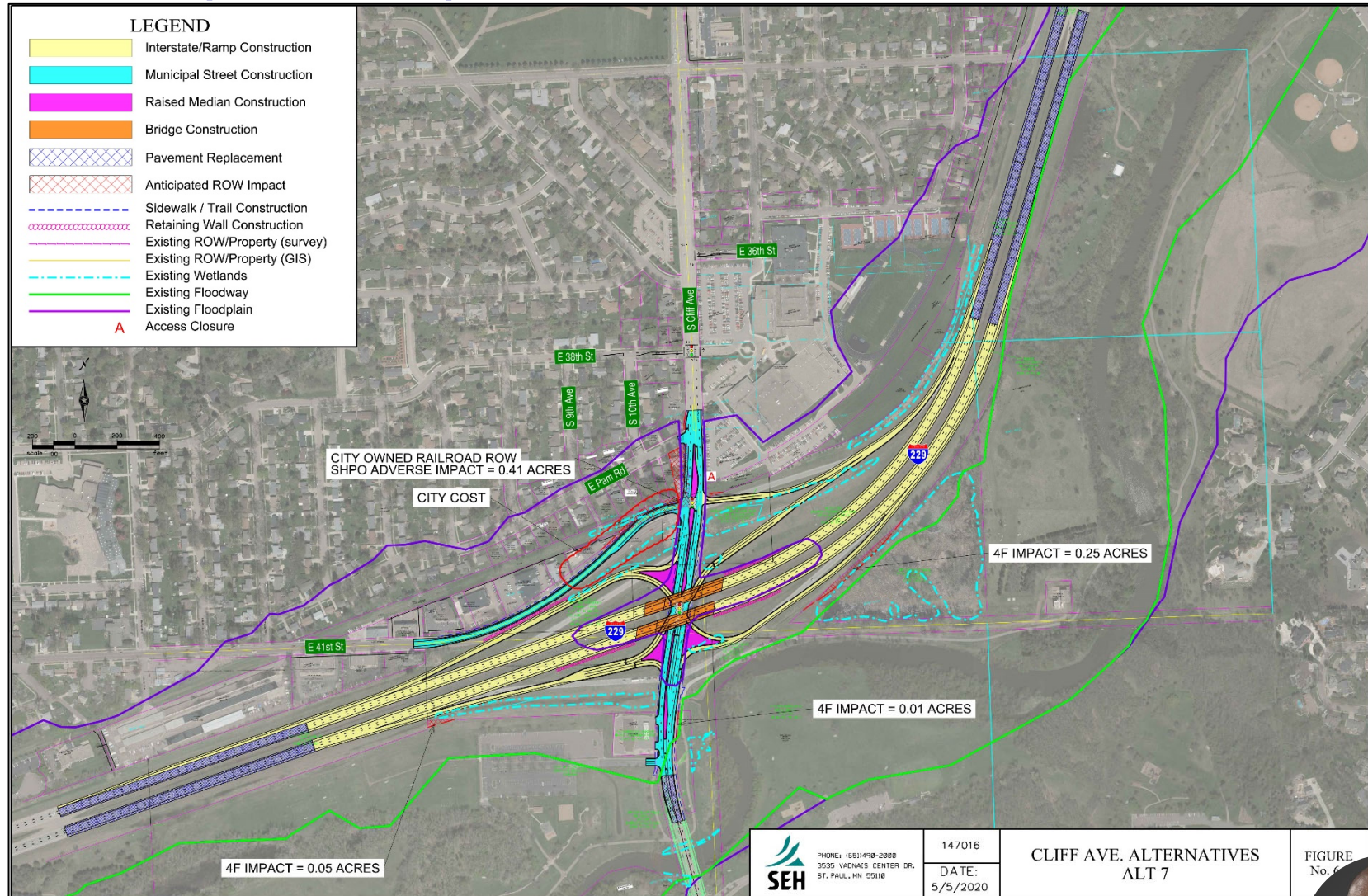


Single Point Urban Interchange
★ Recommended Alternative



Alan Murra

Exit 4 (Cliff Ave) – MIS Alternative 7



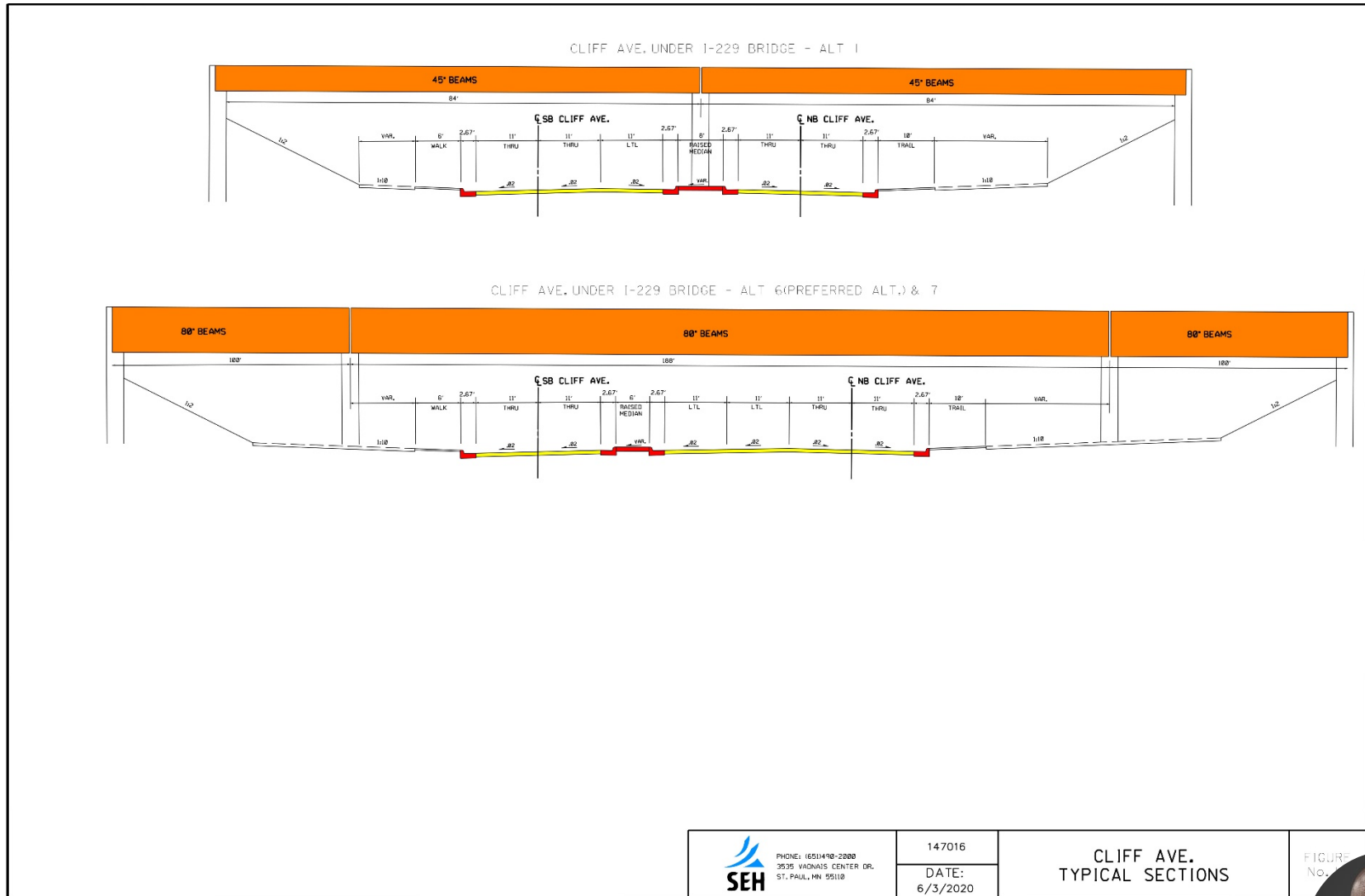
Interchange and Environmental Study for I-229
Exits 3 (Minnesota Ave) and 4 (Cliff Ave)

Single Point Urban Interchange



Alan Murra

Exit 4 (Cliff Ave) – Typical Road Section



Interchange and Environmental Study for I-229
Exits 3 (Minnesota Ave) and 4 (Cliff Ave)



Alan Murra

What alternative performed best? How were they evaluated?



- **Alternative 6** - Convert to a single point urban interchange (SPUI) and realign 41st St at Cliff Ave.



Alan Murra



Exit 4 (Cliff Ave) – Evaluation Matrix

	No-Build No improvements	Alternate #1 Partial Cloverleaf (Loop Ramp)	Alternate #6 SPUI* (re-align 41 st St)	Alternate #7 SPUI*
Evaluation Criteria				
Meets Design Criteria	○	●	●	●
Meets Spacing Criteria	○	◐	●	◐
ROW Impacts	●	●	◐	●
Environmental Impacts	○	◐	◐	◐
Safety Improvements	○	◐	●	◐
Operational Performance	○	◐	●	◐
Non-motorized Facilities	◐	◐	◐	◐
Cost Effectiveness	○	●	◐	●
Planning Level Cost (in million dollars)	\$0.0	\$25.3	\$36.1	\$36.3
Overall	○	◐	●	◐

*SPUI - Single Point Urban Interchange



Interchange and Environmental Study for I-229
Exits 3 (Minnesota Ave) and 4 (Cliff Ave)

Comparison of key performance indicators:

- *Conformance with plans and design standards*
- *Right-of-way impacts (displacements and acres required)*
- *Environmental Impacts (natural and social environment concerns)*
- *Traffic Safety and Operations*
- *Construction (traffic staging and costs)*

Recommended: Alternative 6

- *Selected by the SAT as most able to achieve the project's Purpose and Need, especially safety improvements (expected crash reductions).*
- *Best value alternative for anticipated improvements.*

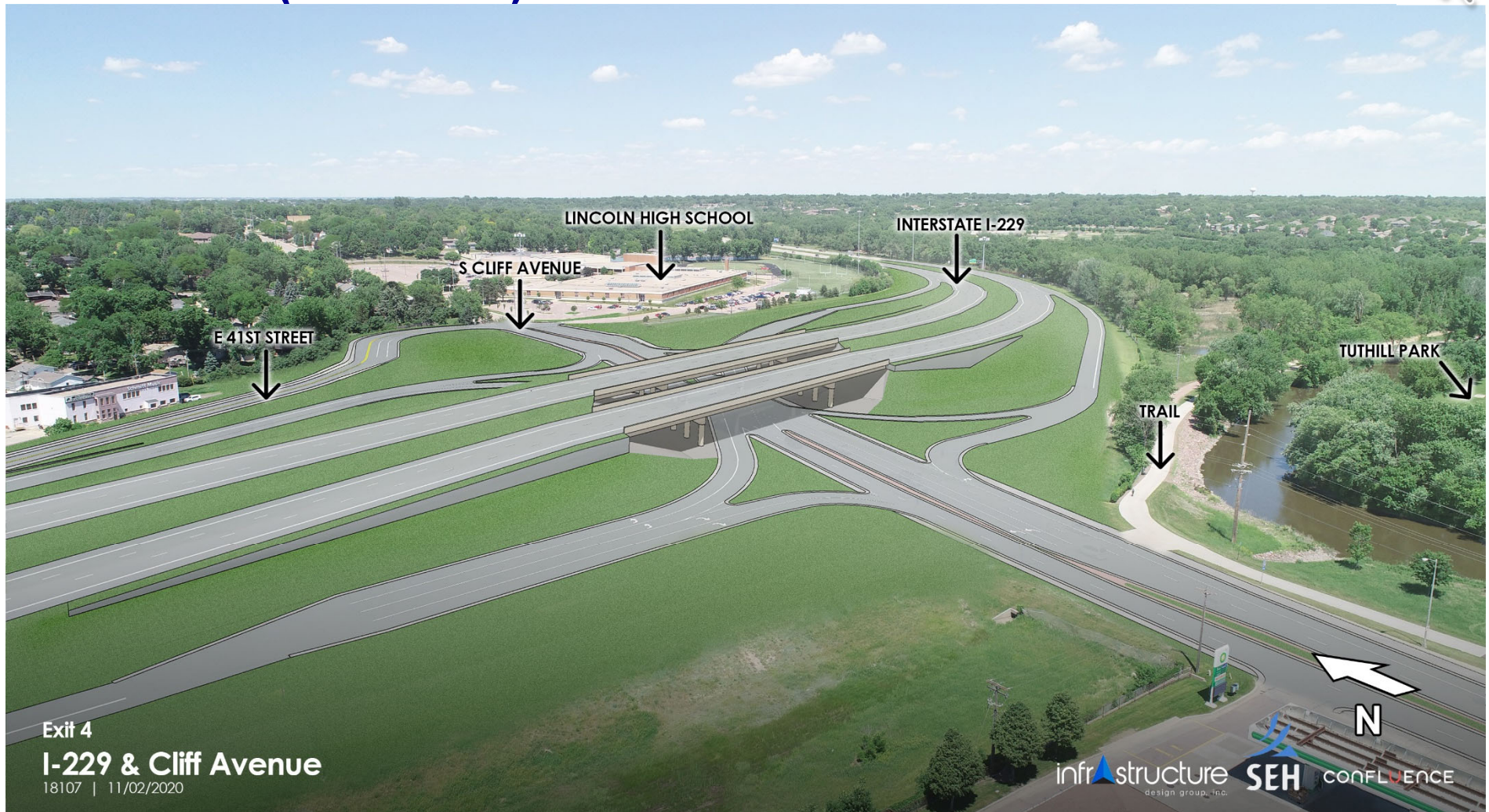
Legend

- Good
- ◐ Fair
- ◑ Satisfactory
- ◒ Unsatisfactory
- Poor



Alan Murra

Exit 4 (Cliff Ave) – Alternative 6★



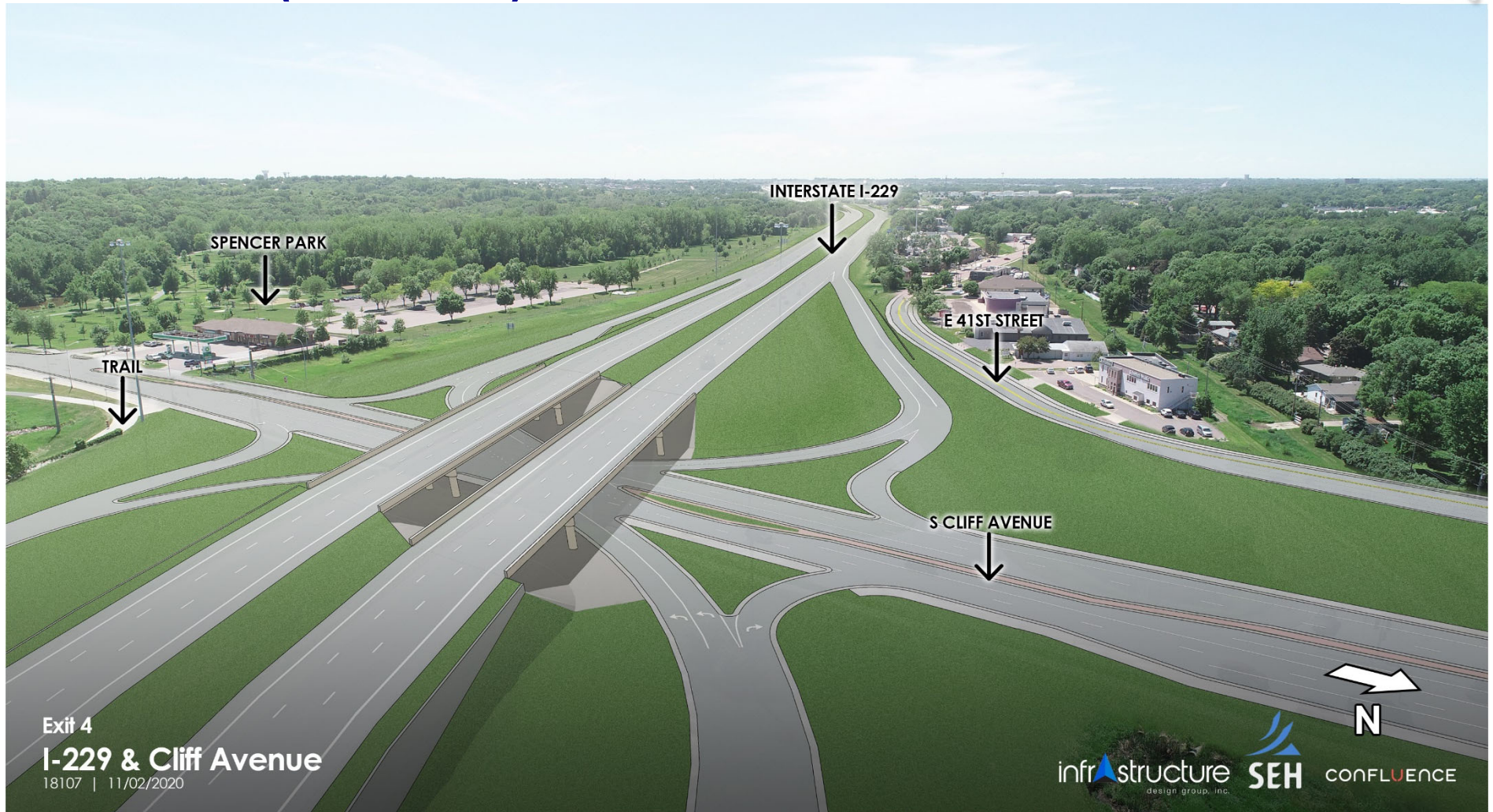
Interchange and Environmental Study for I-229
Exits 3 (Minnesota Ave) and 4 (Cliff Ave)

Single Point Urban Interchange
★ Recommended Alternative



Alan Murra

Exit 4 (Cliff Ave) – Alternative 6★



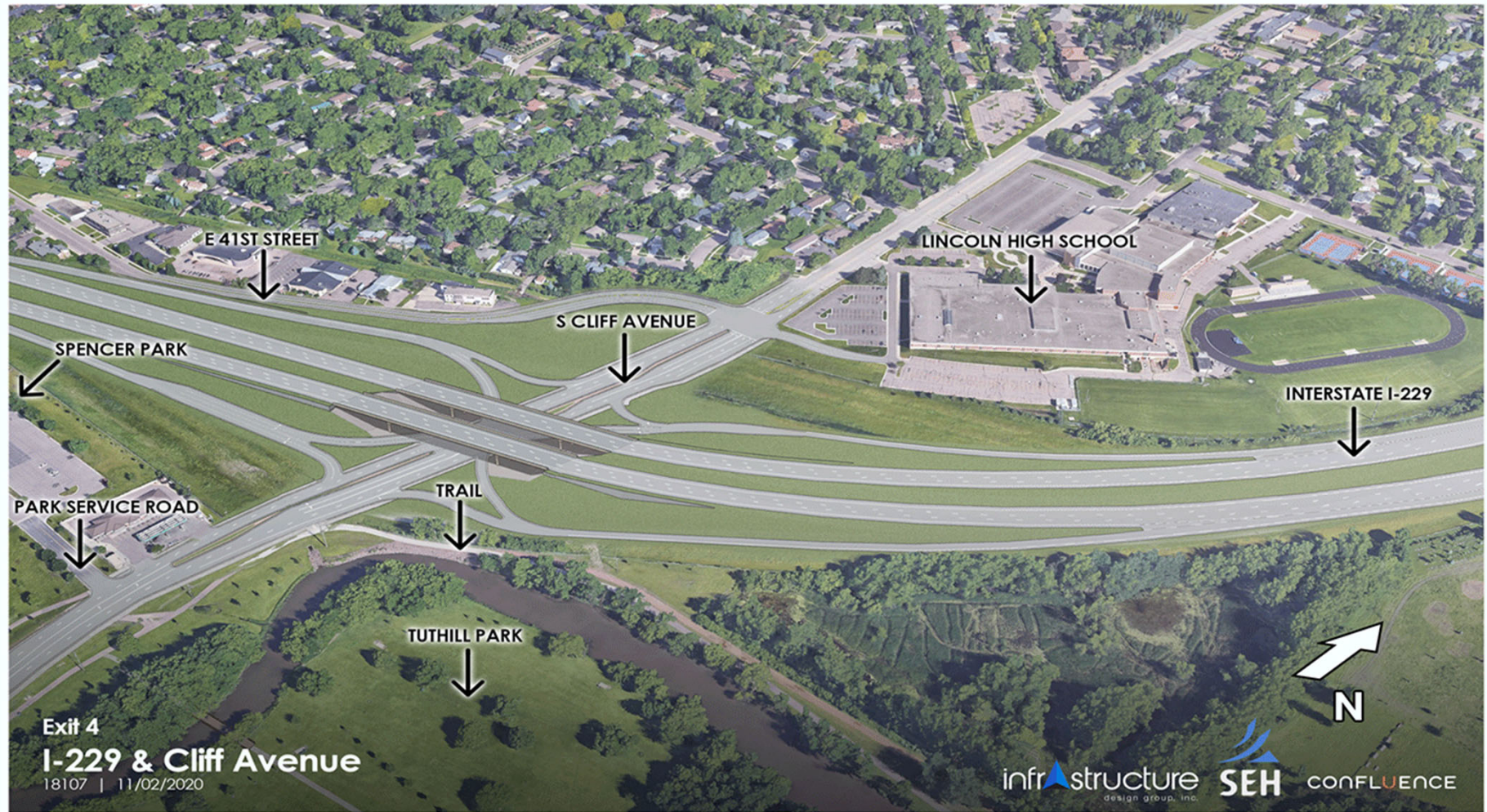
Interchange and Environmental Study for I-229
Exits 3 (Minnesota Ave) and 4 (Cliff Ave)

Single Point Urban Interchange
★ Recommended Alternative



Alan Murra

Exit 4 (Cliff Ave) – Alternative 6★



Single Point Urban Interchange
★ Recommended Alternative



Alan Murra



We want to hear from you!

- Provide your feedback, comments, and questions by visiting the project website:

www.i229exits3and4.com

- You can also email or call Project Contacts:

Steve Gramm – SDDOT Project Development
605.773.6641 or steve.gramm@state.sd.us

Shannon Ausen – City of Sioux Falls
605.367.8607 or sausen@siouxfalls.org

Alan Murra – Short Elliott Hendrickson Inc.
605.330.7015 or amurra@sehinc.com

Thank you!



Alan Murra